



GAT MONTHLY MEMBERSHIP PROGRESS REPORT

Results as of: 4/30/2023

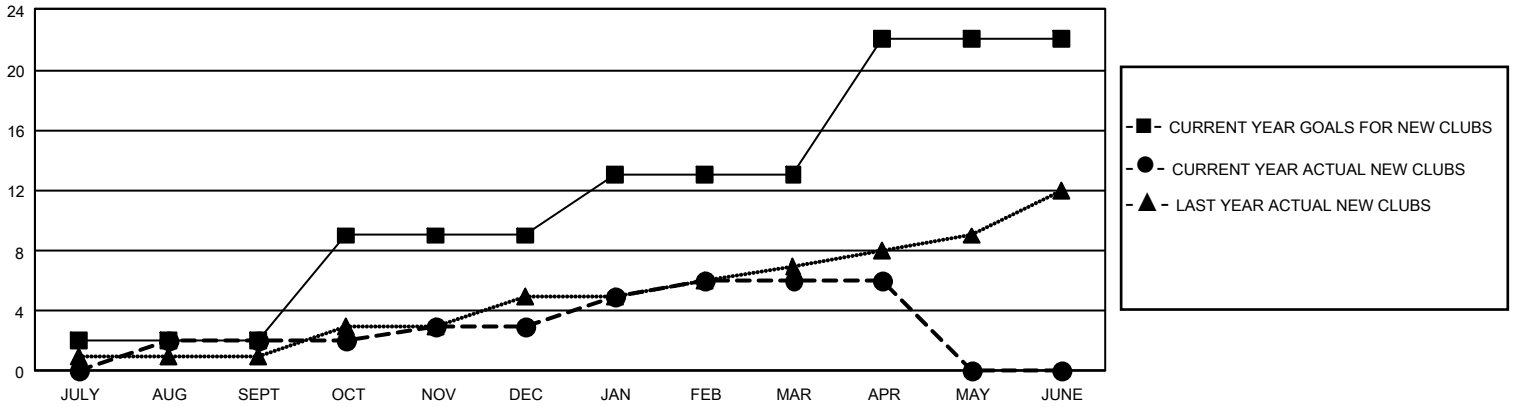
GMT Constitutional Area 1, Group F

REPORT DOES NOT INCLUDE CLUBS IN UNDISTRICTED AREAS.

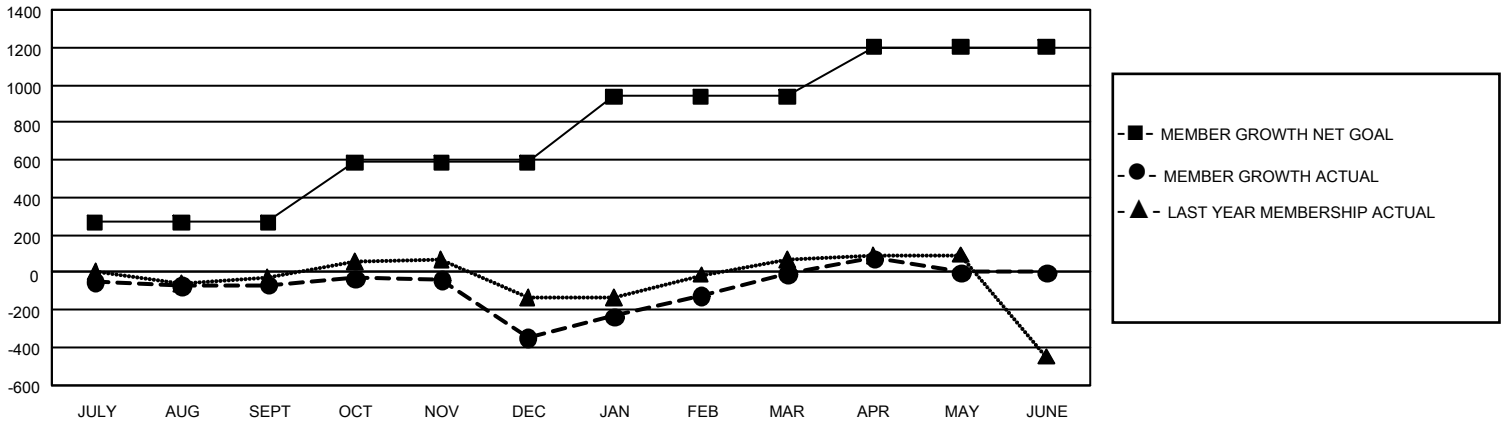
Clubs			
RESULTS FOR 2022-2023			
QUARTER	NEW CLUB GOAL	NEW CLUBS	DROPPED CLUBS
JULY/AUG/SEPT	6	2	5
OCT/NOV/DEC	21	1	14
JAN/FEB/MAR	12	3	0
APR/MAY/JUNE	27	0	0

Members			
RESULTS FOR 2022-2023			
QUARTER	MEMBER GROWTH NET GOAL	MEMBER GROWTH ACTUAL	DROPPED MEMBERS ACTUAL (including transfers)
JULY/AUG/SEPT	268	553	558
OCT/NOV/DEC	318	593	834
JAN/FEB/MAR	353	874	480
APR/MAY/JUNE	262	218	122

GOALS AND ACTUAL NEW CLUBS CUMULATIVE



GOALS AND ACTUAL MEMBERS CUMULATIVE



DROPPED CLUBS: 19	
DROPPED MEMBERS	
DECEASED	270
CLUB CANCELLED	157
OTHER	1,567
TOTAL	1,994

468 CLUBS OF 860 ADDED 1 OR MORE NEW MEMBERS

[CLICK HERE FOR CUMULATIVE MEMBERSHIP DATA](#)

<u>GENDER DISTRIBUTION</u>	
MALE	13,984 (60.19%)
FEMALE	9,219 (39.68%)
NON BINARY	0 (0.00%)
PREFER NOT TO ANSWER	31 (0.13%)
TOTAL FAMILY UNIT MEMBERS	4,245
FAMILY MEMBERS PAYING HALF DUES	2,215